

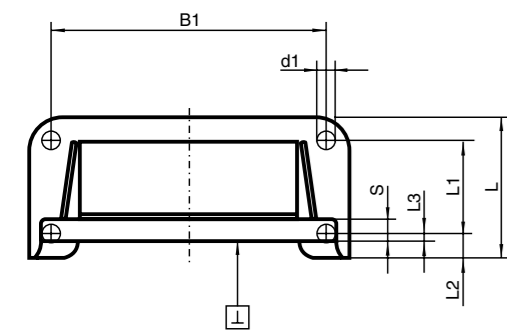
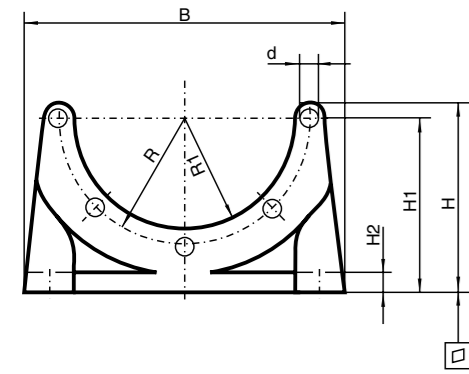


Pumpenträgerfüße Baureihe PTFL / PTFS

nach VDMA 24 561, für Motorbauform IM B5

PTFL Leichte Baureihe

PTFL Light version

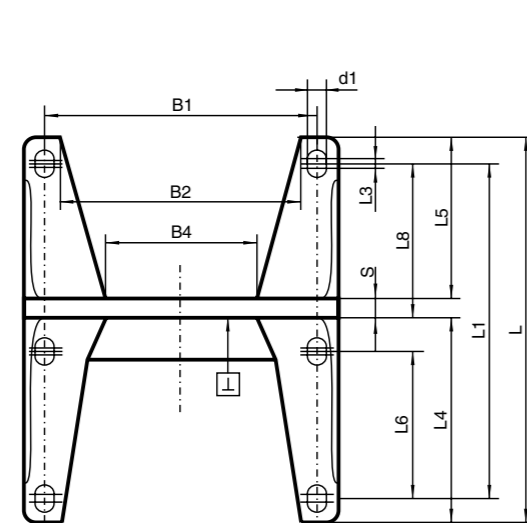
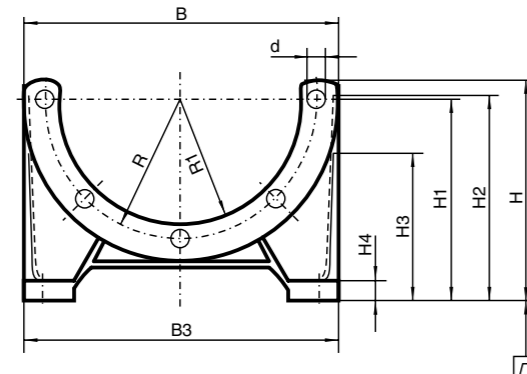


Footbracket Series PTFL / PTFS

acc. to VDMA 24 561 for bellhousings, motor type IM B5

PTFS Schwere Baureihe

PTFS Heavy duty version



| Typ Type | B | B1 | B2 | B3 | B4 | L | L1 | L2 | L3 | L4 | L5 | L6 | H | H1 | H2 | H3 | H4 | R | R1 | S | d | d1 | L | L8 | [mm] | [mm] |
|-------------|-----|-----|-----|-----|-----|-----|-----|----|----|-------|------|-----|-----|-----|-----|-----|----|-------|--------|----|----|----|----|-----|------|------|
| PTFL 160 | 160 | 140 | — | — | — | 80 | 50 | 15 | 7 | — | — | — | 108 | 100 | 10 | — | — | 65 | 55 | 12 | 9 | 9 | — | — | 0.2 | 0.5 |
| PTFL 200 | 210 | 180 | — | — | — | 90 | 60 | 15 | 4 | — | — | — | 122 | 112 | 12 | — | — | 82.5 | 72.5 | 14 | 11 | 11 | — | — | 0.2 | 0.5 |
| PTFL 250 | 250 | 220 | — | — | — | 110 | 60 | 25 | 21 | — | — | — | 145 | 132 | 15 | — | — | 107.5 | 95 | 19 | 14 | 14 | — | — | 0.2 | 0.5 |
| PTFL 300 | 290 | 260 | — | — | — | 120 | 80 | 24 | 20 | — | — | — | 172 | 160 | 20 | — | — | 132.5 | 117 | 18 | 14 | 14 | — | — | 0.2 | 0.75 |
| PTFS 250 | 250 | 215 | 193 | 250 | 162 | 260 | 185 | — | 10 | 147.5 | 67.5 | 110 | 167 | 155 | 155 | 120 | 15 | 107.5 | 95.15 | 15 | 14 | 14 | 15 | 60 | 0.2 | 0.5 |
| PTFS 300 | 300 | 265 | 243 | 300 | 207 | 270 | 225 | — | 10 | 172 | 80 | 130 | 197 | 185 | 185 | 145 | 18 | 132.5 | 117.25 | 18 | 14 | 14 | 20 | 75 | 0.2 | 0.75 |
| PTFS 350 | 350 | 300 | 260 | 350 | 210 | 305 | 265 | — | 12 | 195 | 92 | 150 | 255 | 235 | 235 | 184 | 18 | 150 | 130 | 18 | 18 | 18 | 25 | 90 | 0.3 | 1.0 |
| PTFS 400 | 400 | 350 | 320 | 400 | 260 | 350 | 300 | — | 12 | 225 | 105 | — | 277 | 260 | 232 | 220 | 20 | 175 | 151 | 20 | 18 | 18 | — | 100 | 0.3 | 1.0 |
| PTFS 450 | 450 | 400 | 364 | 450 | 317 | 385 | 335 | — | 12 | 250 | 113 | — | 312 | 295 | 272 | 238 | 20 | 200 | 176 | 22 | 18 | 18 | — | 110 | 0.4 | 1.0 |
| PTFS 550 | 550 | 500 | 454 | 550 | 401 | 465 | 415 | — | 12 | 300 | 140 | — | 365 | 350 | 335 | 285 | 25 | 250 | 226 | 25 | 18 | 18 | — | 140 | 0.4 | 1.0 |
| PTFS 660 | 660 | 600 | 550 | 660 | 486 | 555 | 495 | — | 18 | 360 | 165 | — | 400 | 380 | 360 | 308 | 30 | 300 | 276 | 30 | 22 | 22 | — | 165 | 0.4 | 1.0 |

VERSCHENKTE ZEIT WASTED TIME

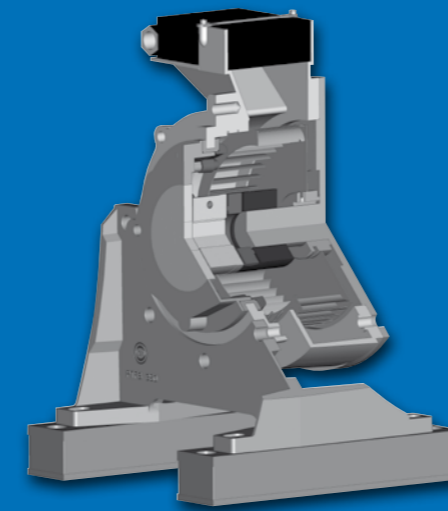
Einzelkomponenten suchen
Looking for individual components

GESCHENKTE ZEIT THE GIFT OF TIME

3D-Baugruppen online konfigurieren
Configure 3D assembly groups online

FLUIDWARE®3D grenzt sich gegenüber üblichen Konfigurations-Tools dadurch ab, dass es in wenigen sinnvollen Auswahlritten den Konstrukteur bei der Suche nach den richtigen Komponenten unterstützt und nur solche Optionen zulässt, die realisierbar sind. FLUIDWARE®3D entlastet den Konstrukteur und hilft ihm täglich wertvolle Zeit einzusparen.

FLUIDWARE®3D makes the design engineer's work much easier and thus saves valuable time – each and every day. FLUIDWARE®3D distinguishes itself from ordinary configuration tools because it supports the design engineer in the search for the correct components by requiring only a few sensible selection steps and performing only the feasible options.



www.fluidware3d.com

FLUIDWARE® 3D
ACCELERATING YOUR PROGRESS

In 3 Schritten zur 3-D-Baugruppe
3D Component Groups in three steps



Schritt 1: Die Registrierung
Step 1: Registration



Schritt 2: Die Konfiguration
Step 2: Configuration

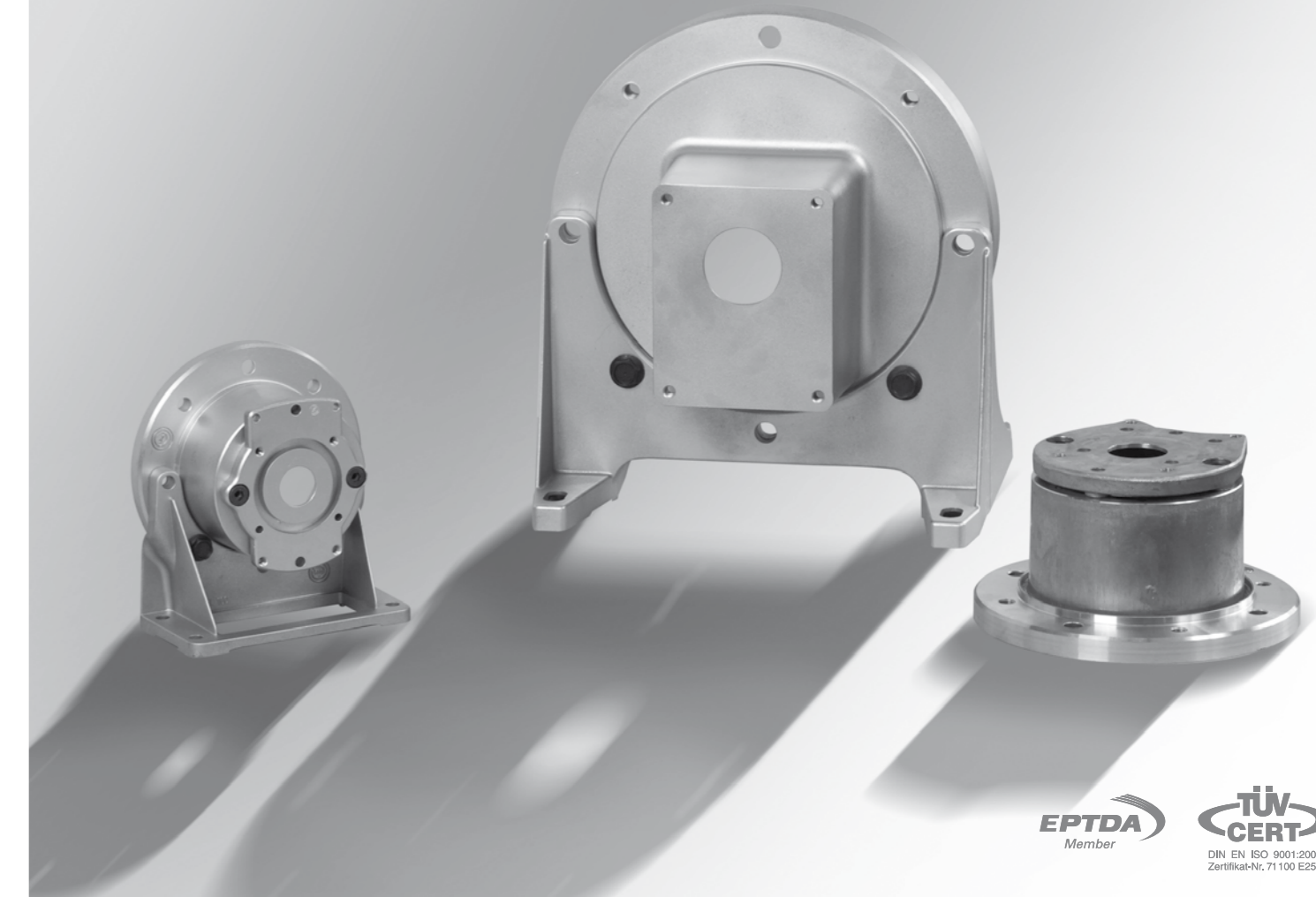


Schritt 3: Der Datei-Download
Step 3: File-download



R+L HYDRAULICS

HYDRAULIC COMPONENTS · POWER TRANSMISSION · OIL COOLERS



Pumpenträger für Zahnradpumpen Bellhousings for Gear Pumps

- Motorbundhöhe gemäß VDMA 24 561
- Kombinierbar mit Fußflanschen nach VDMA 24 561
- Motorflanschdurchmesser von 160–400 mm

- Height of motorflange acc. to VDMA 24 561
- Optional combination with footbrackets acc. to VDMA 24 561
- Motorflange-diameter from 160–400 mm

R+L HYDRAULICS

R+L HYDRAULICS GmbH
Friedrichstraße 6 D-58791 Werdohl
Tel +49 23 92 509-0 Fax +49 23 92 509-509
info@rl-hydraulics.com rl-hydraulics.com

© R+L HYDRAULICS GmbH
Technische Änderungen vorbehalten
Technical changes reserved

Version 05/12
Rechteck-PT

